

## INSTRCUTION FOR UPGRADING SOFTWARE

# CAUTION: DO NOT TURN OFF THE POWER DURING THE UPGRADING

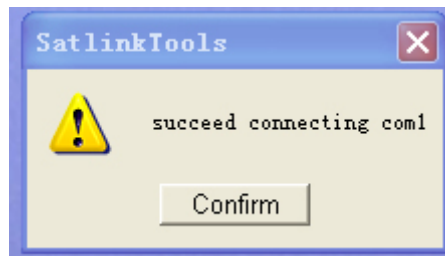
1. Connect this finder with PC through RS-232 cable



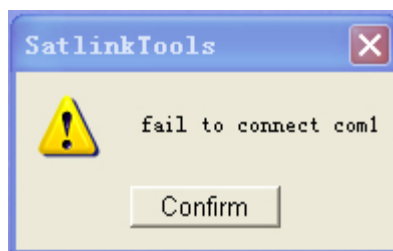
2. Turn on the finder
3. Running the program of LinboxTools



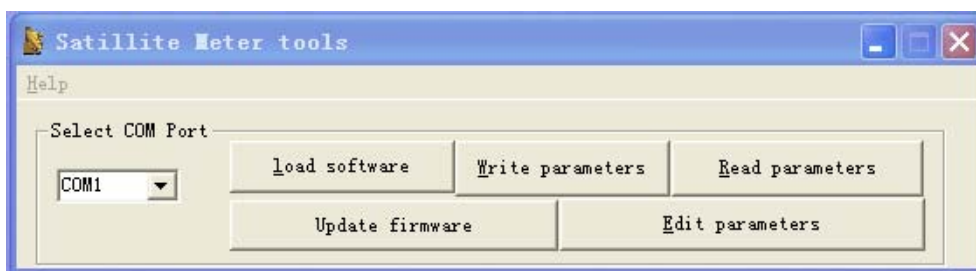
4. When computer shows: succeed connecting com1". Please click " Confirm"



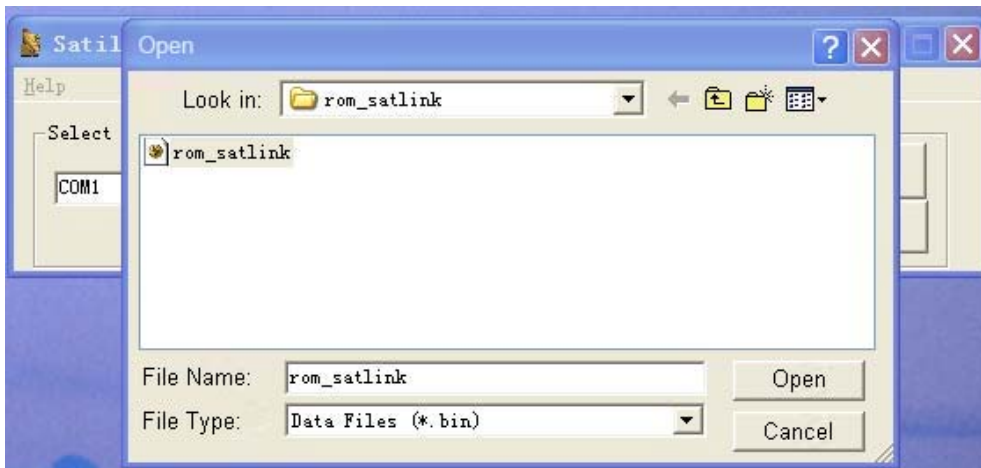
If fail to connect, please check whether this finder already turn on or RS232 cable connecting well with finder or PC



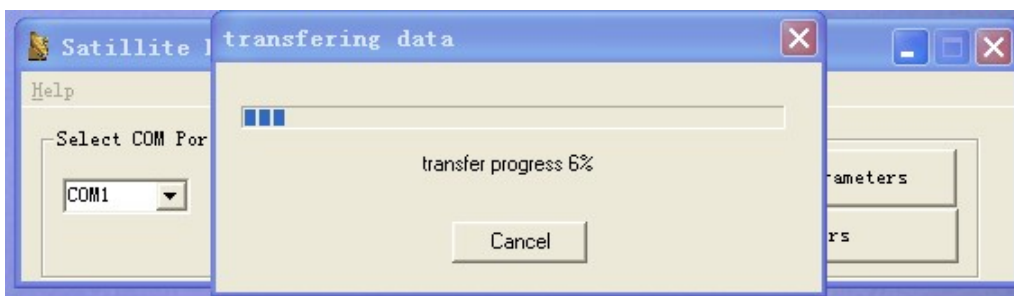
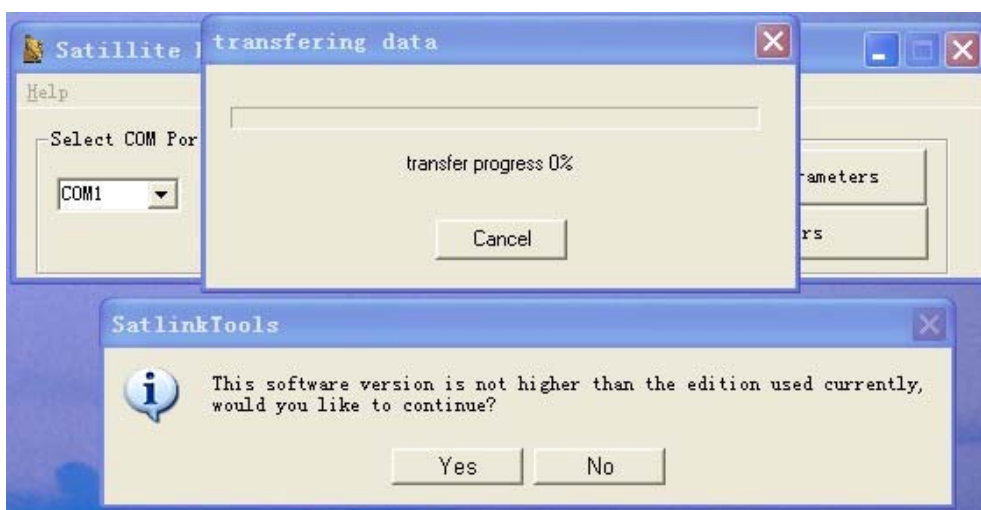
### 5.1 Upgrading the software



Click the " load software", then you will see the following window



Click YES to start upgrading software



About 2 minutes later, the finder will restart automatically, upgrading software is successful

## 5.2 Upgrading data

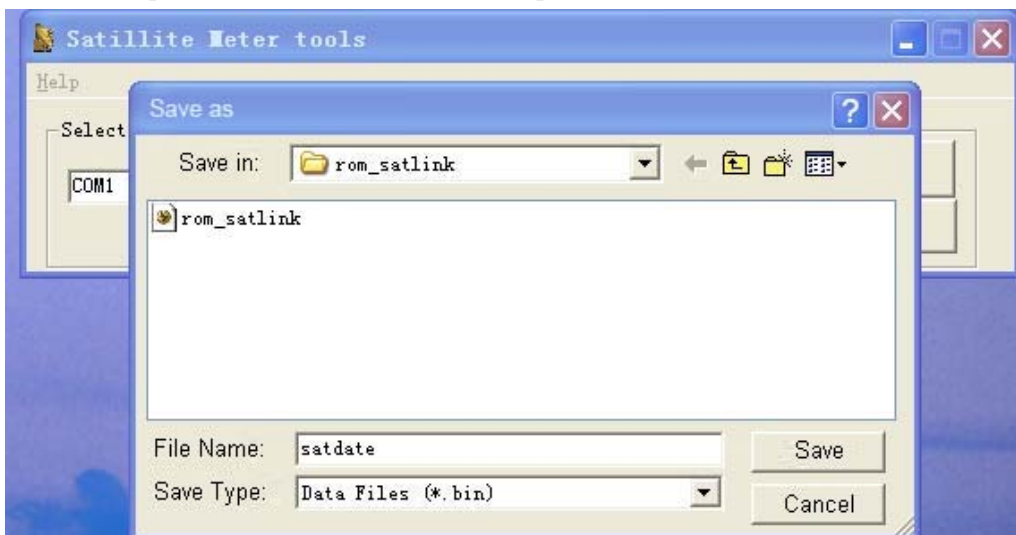
Click “Write parameters” then you will see the following windows:



About 2 minutes later, the finder will restart automatically, sat data upgrading is successful.

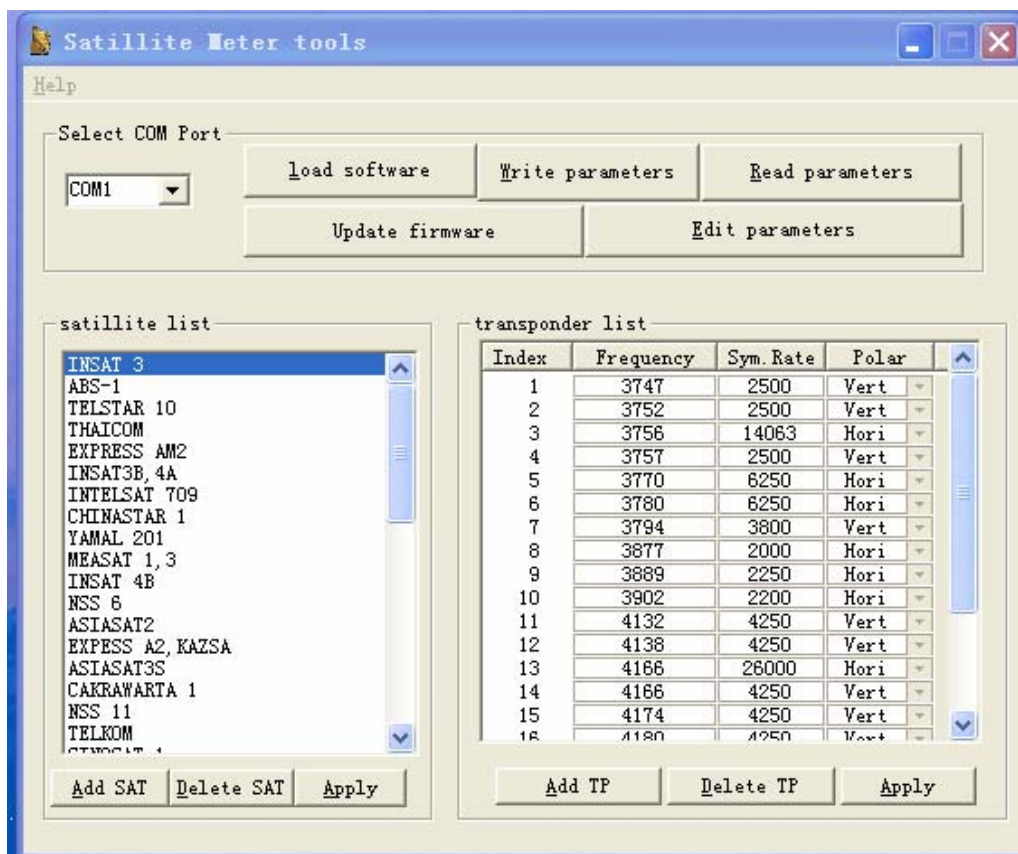
## 5.3 Read the Satellite Meter and save it to the computer

Press “Read parameters” and save it to the computer

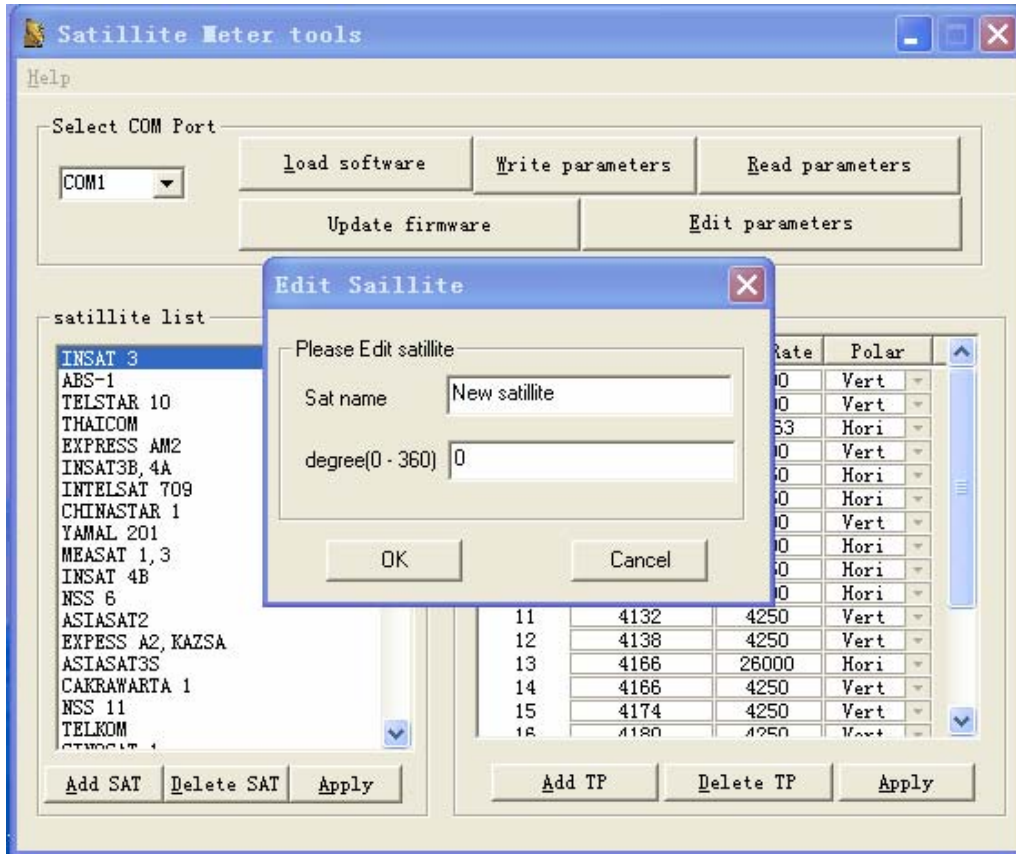


## 5.4 Edit the satellite data

Press “ Edit parameters”, open the data file which offer by the factory or your desire data file ( the data file is 236KB)



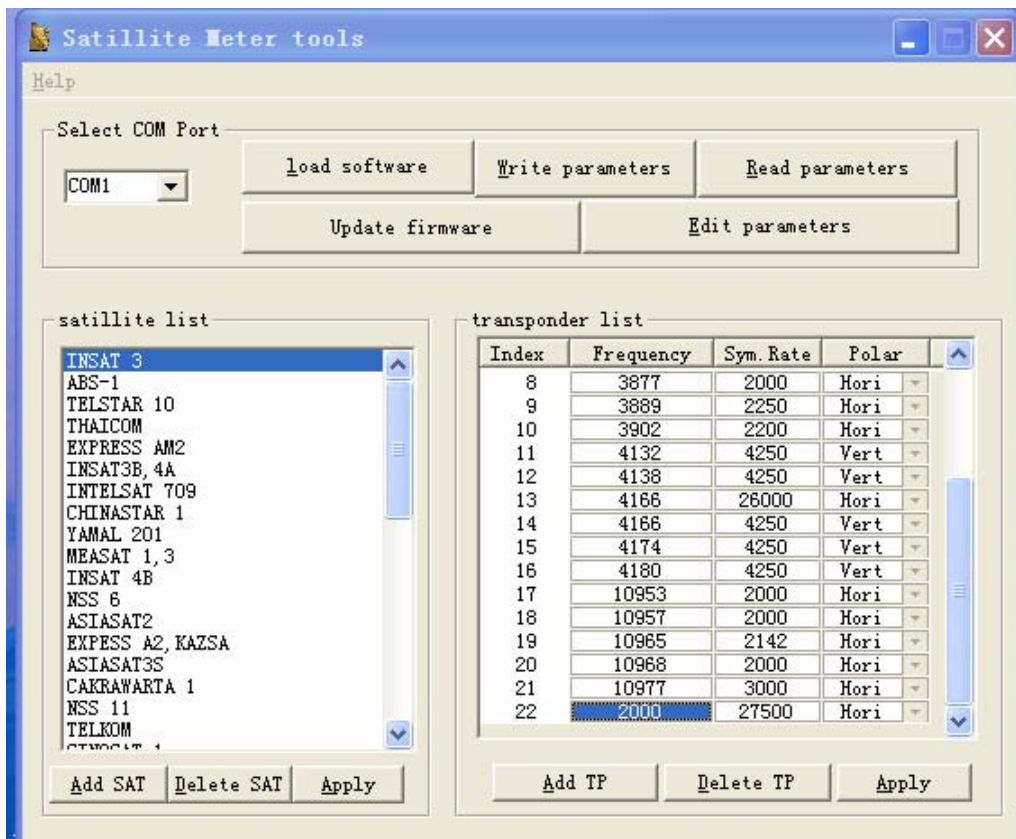
### 5.4.1 Add SAT:



### 5.4.2 Delete SAT:

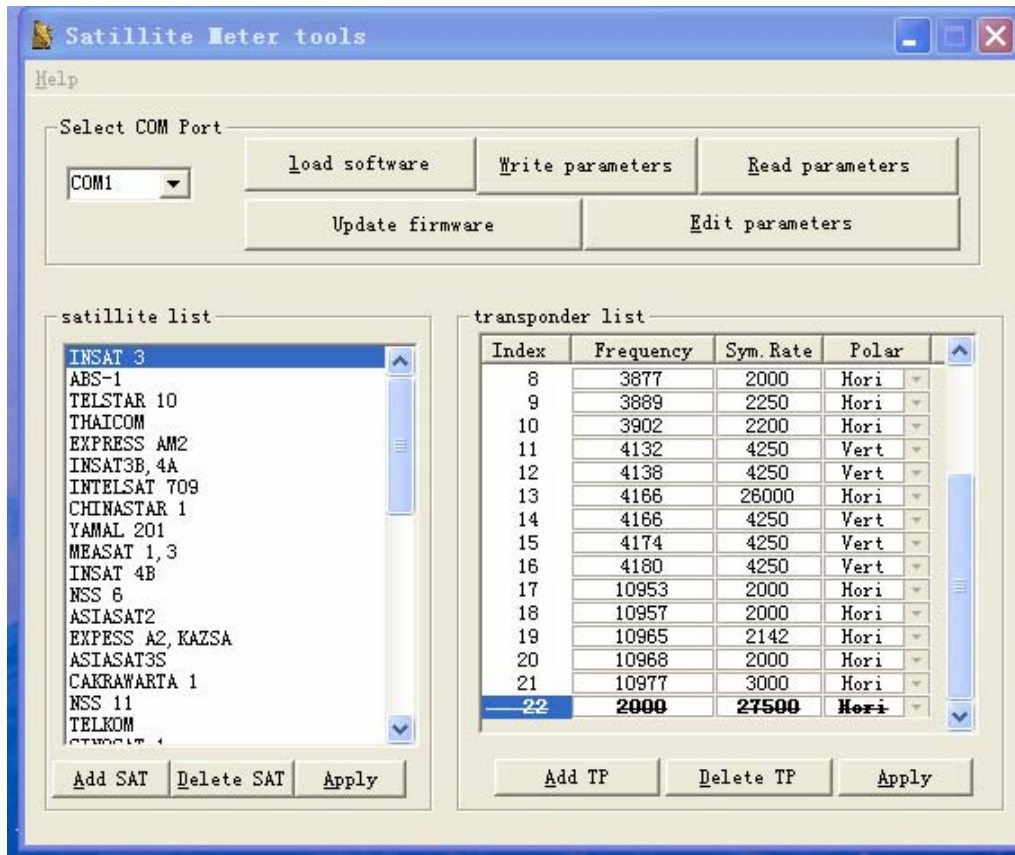
Please choose one satellite you want to delete, then press "Delete button; if you finish operation, press apply.

### 5.4.3 Add TP:



Double click the cell, then you can edit the Frequency, Sym.Rate, Polar. Or you can edit the existing TP frequency.

#### 5.4.4 Delete TP:



**5.4.5 Apply:** If you finish operation, press apply.